



Senate Labor & Industry Committee

2009

Posted by: Pennsylvania Federation of Injured Workers

**Labor & Industry Committee
Democrat Party**



Senate District 2

Christine M. Tartaglione
Minority Chairman
Democrat
458 Main Capitol Bldg.
Senate Box 203002
Harrisburg, PA 17120-3002
Bus: (717) 787-1141
Bus Fax: (717) 787-7439
E-mail: tartaglione@pasenate.com

**Labor & Industry Committee
Republican Party**



Senate District 27

John R. Gordner
Majority Chairman
Republican
351 Main Capitol Bldg.
Senate Box 203027
Harrisburg, PA 17120-3027
Bus: (717) 787-8928
Bus Fax:
E-mail: jgordner@pasen.gov



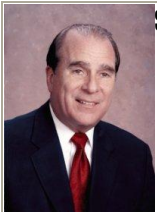
Senate District 1

Lawrence M. Farnese Jr.
Committee Member
Democrat
458 Main Capitol Bldg.
Senate Box 203001
Harrisburg, PA 17120-3001
Bus: (717) 787-5662
Bus Fax:
E-mail: farnese@pasenate.com



Senate District 13

Lloyd K. Smucker
Majority Vice Chairman
Republican
185 Main Capitol Bldg.
Senate Box 203013
Harrisburg, PA 17120-3013
Bus: (717) 787-6535
Bus Fax:
E-mail: ismucker@pasen.gov



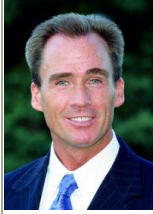
Senate District 32

Richard A. Kasunic
Committee Member
Democrat
458 Main Capitol Bldg.
Senate Box 203032
Harrisburg, PA 17120-3032
Bus: (717) 787-7175
Bus Fax: (717) 787-0195
E-mail: rkasunic@pasenate.com



Senate District 25

Joseph B. Scarnati, III
ex-officio
Republican
292 Main Capitol Bldg.
Senate Box 203025
Harrisburg, PA 17120-3025
Bus: (717) 787-7084
Bus Fax: (717) 772-2755
E-mail: jscarnati@pasen.gov



Senate District 5

Michael J. Stack
Committee Member
Democrat

543 Main Capitol Bldg.
Senate Box 203005
Harrisburg, PA 17120-3005
Bus: (717) 787-9608
Bus Fax:
E-mail: stack@pasenate.com



Senate District 36

Michael W. Brubaker
Committee Member
Republican

457 Main Capitol Bldg.
Senate Box 203036
Harrisburg, PA 17120-3036
Bus: (717) 787-3156
Bus Fax: (717) 783-3156
E-mail: mbrubaker@pasen.gov



Senate District 48

Mike Folmer
Committee Member
Republican

457 Main Capitol Bldg.
Senate Box 203048
Harrisburg, PA 17120-3048
Bus: (717) 787-5708
Bus Fax: (717) 787-3455
E-mail: mfolmer@pasen.gov



Senate District 10

Charles T. McIlhinney
Committee Member
Republican

187 Main Capitol Bldg.
Senate Box 203010
Harrisburg, PA 17120-3010
Bus: (717) 787-7305
Bus Fax: (717) 783-5962
E-mail: cmcilhinney@pasen.gov



Senate District 41

Donald C. White
Committee Member
Republican

281 Main Capitol Bldg.
Senate Box 203041
Harrisburg, PA 17120-3041
Bus: (717) 787-8724
Bus Fax:
E-mail: dwhite@pasen.gov